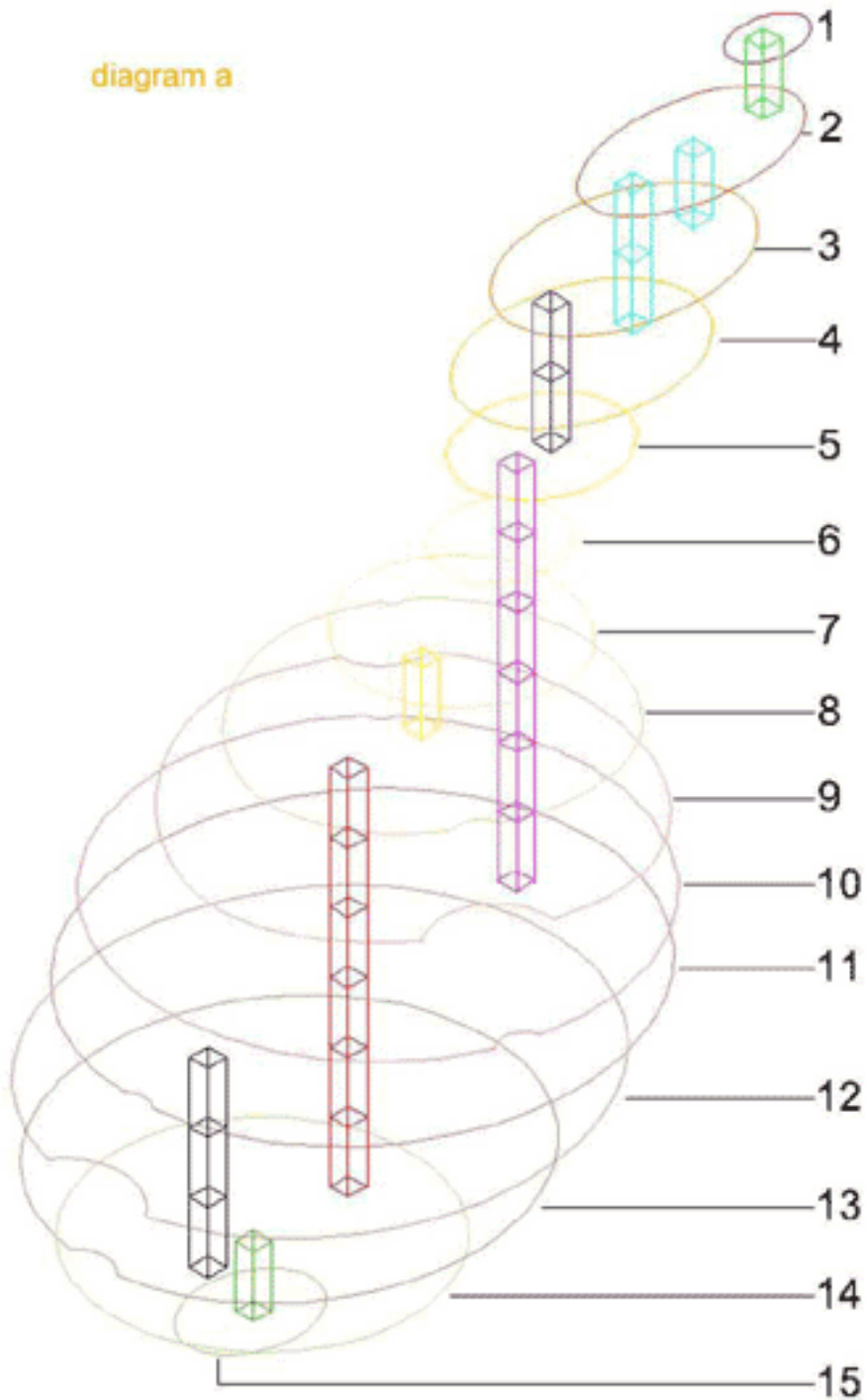


diagram a



how to make model

cut out the red rings and arrange in order as shown by diagram a.

cut out 29 fixing tabs and fix to red rings as indicated in diagram a

where there are 2 fixing points on a ring fix tabs so the vertical elements are at 90 degrees to each other

for added support where there is only one fixing point stick 2 tabs together to create a 2 sided rectangular box.

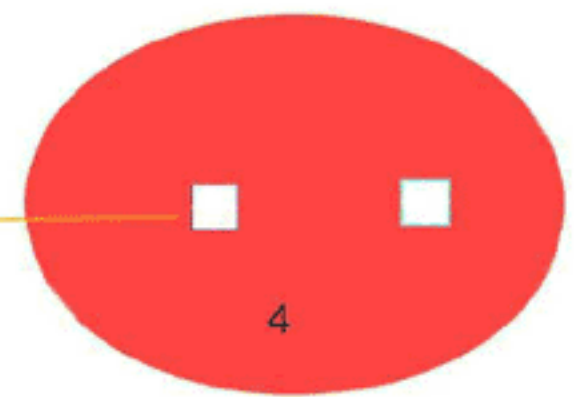
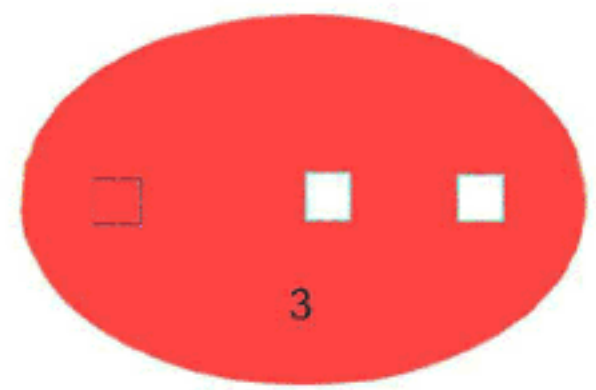
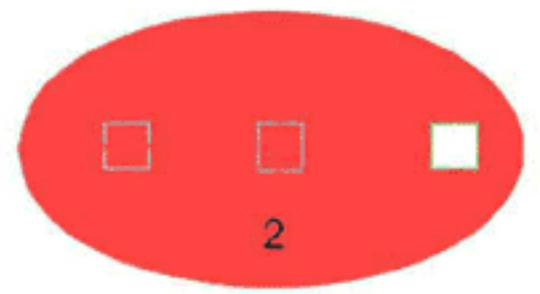
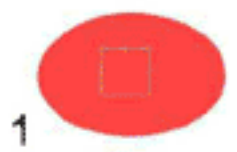
where the fixing box is infilled red this indicates a fixing point underneath

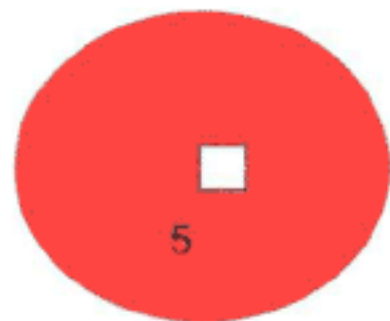
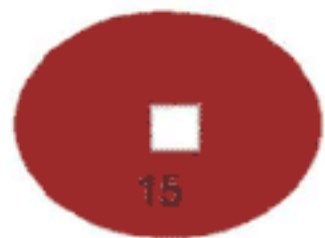
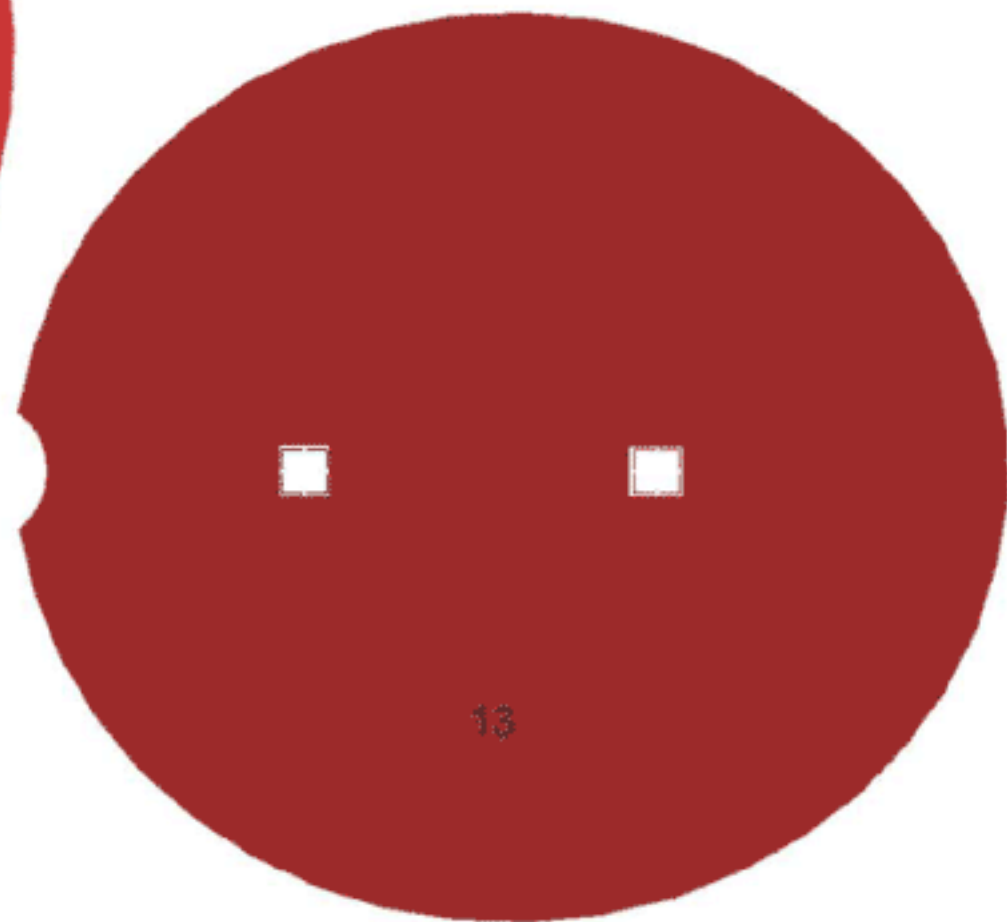
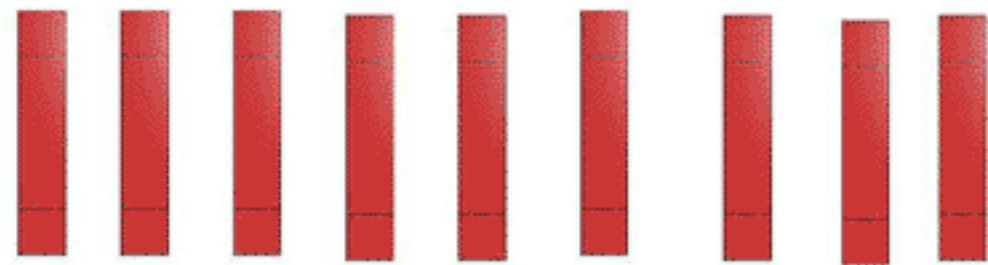
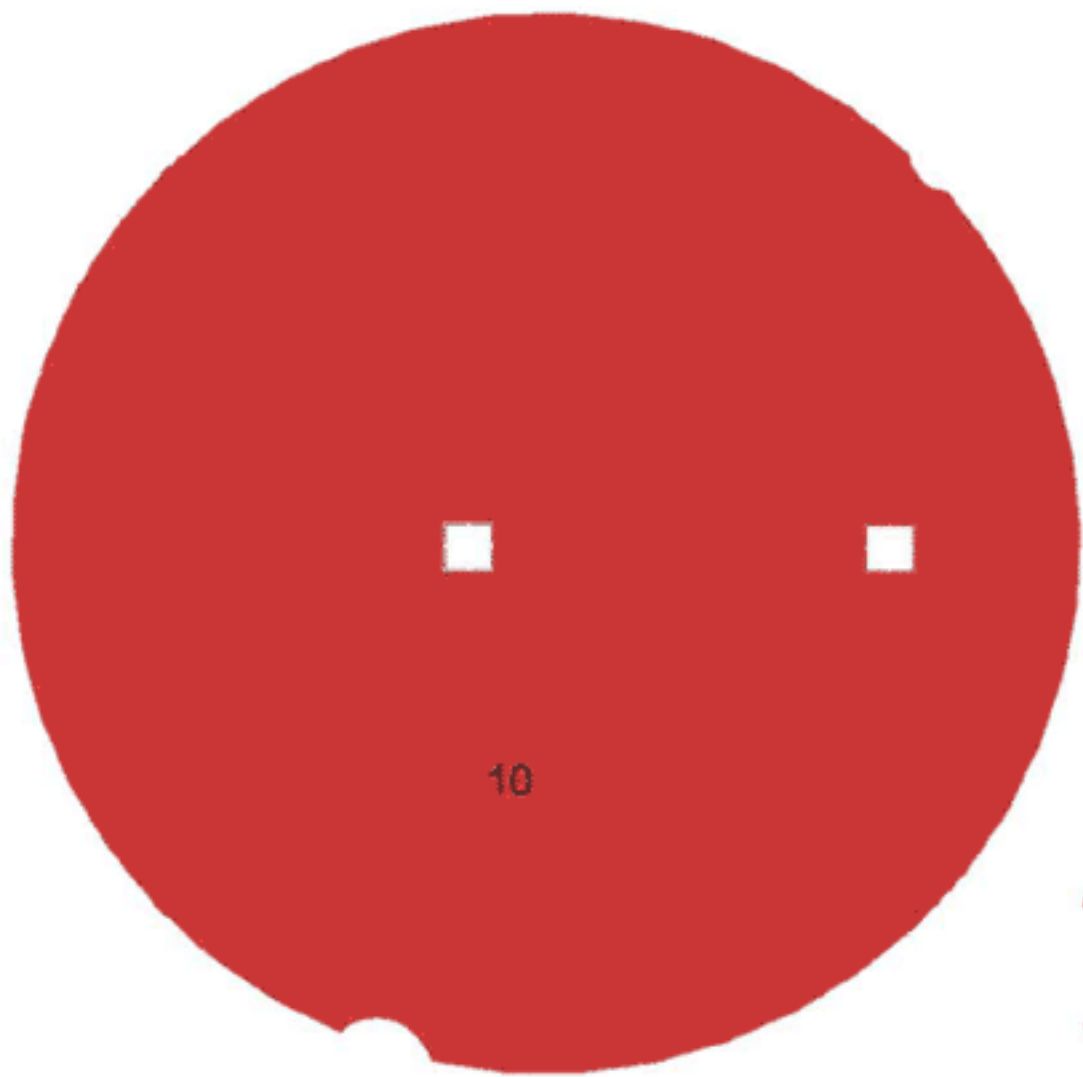
the numbers on each disk correlate to the diagram.

once you have done this try creating your own biomorphic shape.



fixing point







fold on dotted

fixing tab

